



Badger Meter Europa

Badger Meter Europa GmbH  
Nürtinger Str. 76  
72639 Neuffen (Germany)  
Tel. +49-7025-9208-0  
Fax +49-7025-9208-15  
www.badgermeter.de  
badger@badgermeter.de



## Barstock control valve RC250 for RO systems



### Description

- Control valve in sizes 1", 3/4", 1/2" and 1/4"
- Globe barstock or casted (316) body
- Suitable for control of RO water
- Many variations not listed here

### Application

Designed for pressure control in reverse osmosis systems.

### Connections

The valves are available with:

- 1/4" NPT internal threads with nominal pressure 345 bar
- 3/8" NPT internal threads with nominal pressure 345 bar
- 1/2" NPT internal threads with nominal pressure 345 bar
- 3/4" NPT internal threads with nominal pressure 100 bar
- 1" NPT internal threads with nominal pressure 100 bar
- Special versions for higher pressure are available.

### Material

The normally used materials for body and bonnet are:

- 1.4539 (904L)
- 1.4404 (316L)
- Special versions with Duplex® or Hastelloy® materials are available

### Guiding

Standard or optional medium and heavy duty guiding **Data Sheet GDG**.

### Packing

Standard are PTFE chevron rings.

### Electric actuator

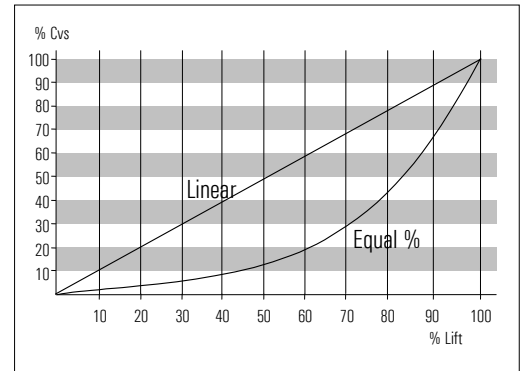
- Special version for sea water environment
- Input typically 3 point control
- Alternative 4-20 mA input signal available as option
- Two adjustable limit switches integrated
- Power supply:  
24 VDC, 24 VAC, 115 VAC, 230 VAC, available **data sheet AC-HH500**



### Innervel chart

NW	Size	Cvs	NW	Size	Cvs
	V	6,0		O	0,003
	U	5,0		P1	2,0 E-03
	T	4,5		P2	1,3 E-03
	S	4,0		P3	1,0 E-03
	R	3,5		P4	6,0 E-04
	A	2,5		P5	4,0 E-04
	B	2,0		P6	2,7 E-04
	C	1,25		P7	1,8 E-04
	D	0,80		P8	1,2 E-04
	E	0,50		P9	8,0 E-05
	F	0,32		P10	5,0 E-05
	G	0,20		P11	3,6 E-05
	H	0,13		P12	2,4 E-05
	I	0,08		P13	1,6 E-05
	J	0,05		P14	1,0 E-05
	K	0,03		P15	6,0 E-06
	L	0,02		P16	4,0 E-06
	M	0,01		P17	2,7 E-06
	N	0,006		P18	1,8 E-06

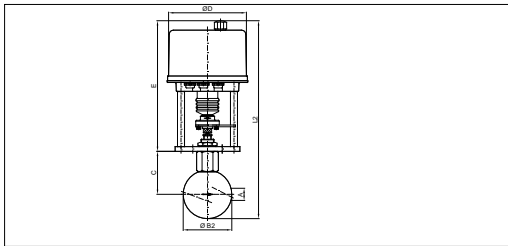
### Innervel characteristic



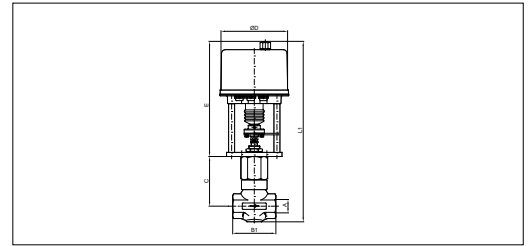
### Seat leakage

0.01% of Cvs for "O" and larger                      ANSI Class IV  
 0.1% of Cvs for "P1" and smaller                      ANSI Class III  
 Optional: Metallic or soft seated (PTFE or Kel-F).

For detailed information, see **data sheet TRM**.



Standard 1/4", 1/2", 3/4"



Heavy duty 1/2", 3/4", 1"

### Sizes (in mm)

A	B1	Ø B2	C	ØD	E	Approx. L1	Approx. L2
1"	102	127	100	132	247	385	410
3/4"	86	108	100	132	247	380	400
1/2"	70	83	73	132	222	320	340
1/4" + 3/8"	54	57	48	132	215	280	-